



5Eleven DesignZ, LLC

Email: [Superjet511@yahoo.com](mailto:Superjet511@yahoo.com)

Phone: 734-719-0311

## Grill Guard Installation Guide

DK4210 DK4510 DK4710 DK5010 DK5310 DK5510 DK6010 (Models with 6 bolts securing the factory brush guard to the frame)

Thank you for your purchase! We want you to be completely satisfied with our products. If you have any questions or concerns, please reach out via the contact information above and we will do all that we can to assure your experience with us is a positive one.



Qty: 2 - M10 x  
25mm Hex Head  
Screw



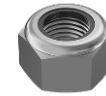
Qty: 2 - M10  
Nylon Lock Nut



Qty: 2 - M10  
Washer



Qty: 2 - M12 x  
45mm Hex Head  
Screw



Qty: 2 - M12  
Nylon Lock Nut



Qty: 2 -  
Fiber/Plastic  
Washer

Required / suggested tools:

Spring clamps  
Permanent marker  
Center punch  
Hammer  
1/8" drill  
7/16" drill  
Drill motor

(2) 17mm wrenches or socket wrenches  
18mm socket wrench

Below is the process for installing your grill guard on your tractor.

- 1) Remove the upper 2 bolts securing the factory brush guard to the tractor's frame.
- 2) Remove each of the nuts and washers from the pivot screws at the bottom on each side of the factory brush guard.
- 3) Assure that the latches on each side that keep the upper guard in place are engaged so that the guard will not fall during the next step.
- 4) Remove one of the pivot screws and replace it with one of the supplied M12 x 45mm screws until the end of the screw is just inside the factory guard mounting brackets. Repeat on the other side.
- 5) Place the lower 511 guard into the factory brush guard from the front the while aligning the upper mounting flanges with the pivot screws.
- 6) Reinstall the two bolts securing the factory brush guard removed during step 1. Do not tighten these bolts at this time. The lower guard needs to be able move for installation.
- 7) Place the upper 511 guard into the factory brush guard from the front while aligning the lower mounting flanges with the pivot screws. It may be helpful to pull the latch pins and rotate the upper portion of the factory guard forward while installing the 511 guard.

- 8) Once the mounting flanges on both the upper and lower guard are aligned with the pivot screws, slide the pivot screws inward through the upper guard's flanges.
- 9) Place one of the supplied fiber/plastic washers between the upper and lower guard's flanges on each side and slide the pivot screw the rest of the way through and install the supplied 12mm washers and locknuts. It is not necessary to tighten these nuts at this time (Figure 1).
- 10) Position the upper 511 guard at the desired depth in relation to the cross bar of the factory guard and hold in place by clamping the upper flanges to the frame. Rubber tipped spring clamps work well to hold it in place. Assure that the clip on the latch pins clears the back of the 511 guard when rotated (Figure 2).
- 11) Mark each side of the factory brush guard through the oval shaped hole on each upper flange of the 511 guard using a permanent marker.
- 12) At this time, you can remove the clamps and pivot the 511 guard forward to allow for drilling the holes on each side.
- 13) Using a center punch, punch each side of the factory guard in the center of the oval marked during step 6.
- 14) Start out by drilling a pilot hole with a small drill (1/8" works well) followed by a 7/16" drill. Any type of cutting fluid or oil aids in the drilling. Coating the inside of the holes with touch up paint will help prevent rust.
- 15) Pivot the 511 guard into position aligning the drilled holes with the holes in the flanges.
- 16) Install the M10 x 25mm hex head screws from the outside through the frame and flange and use the flat washer followed by the lock nut.
- 17) Tighten the upper nuts.
- 18) Moving back down to the pivot screws, tighten the nuts until the desired amount of resistance is obtained when you rotate the factory guard.
- 19) Tighten the two screws removed during step 1.
- 20) Installation is now complete.



(Figure 1)



(Figure 2)



Completed Installation (in Frame)