



5Eleven DesignZ, LLC

Email: Superjet511@yahoo.com

Phone: 734-719-0311

Grill Guard Installation Guide

L3560, L3560 Grand, L4060, L4060 Grand, L4760, L5060, L5460 & L6060

Thank you for your purchase! We want you to be completely satisfied with our products. If you have any questions or concerns, please reach out via the contact information above and we will do all that we can to assure your experience with us is a positive one.



Qty: 6 - 3/8" x 1" SS
Button Head Screw



Qty: 6 - 3/8" SS
Nylon Lock Nut



Qty: 6 - 3/8" SS
Washer

Required / suggested tools:

Wrenches / sockets for lower pivot bolt hardware

Spring clamps

Permanent marker

Center punch

Hammer

1/8" drill

3/8" drill

Drill motor

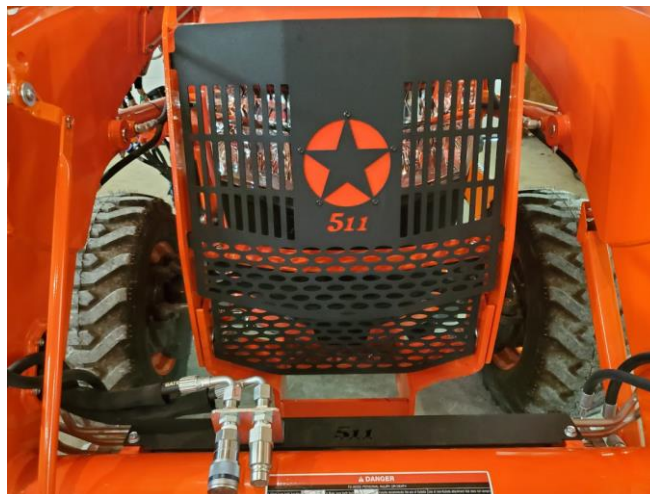
9/16" wrench or 9/16" socket wrench

7/32" L key (allen wrench)

Below is the process for installing your grill guard on your tractor.

- 1) Remove each of the nuts and washers from the large pivot bolts at the bottom on each side of the factory brush guard, noting the order in which they are removed.
- 2) Slide the bolts outward until the end of the bolts are just inside the factory guard mounting brackets.
- 3) Place the lower 511 guard into the factory brush guard from the front mounting flanges facing backward while aligning the lower mounting flanges with the large pivot bolts. It may be helpful to pull the latching pin and rotate the upper portion of the factory guard forward while installing the 511 guard.
- 4) Once the mounting flanges are aligned, push the large pivots bolts inward and install the existing washers and nuts in the opposite sequence in which they were removed. It is not necessary to tighten these nuts at this time.
- 5) Position the 511 guard at the desired depth in relation to the lower cross bar of the factory guard's upper frame and hold in place with clamps. Rubber tipped spring clamps work well to hold it in place.
- 6) Mark each side of the factory brush guard's cross bar through the oval shaped hole on the horizontal flanges of the lower 511 guard using a permanent marker.
- 7) Using a center punch, punch each side of the factory guard in the center of the oval marked during step 6.

- 8) Start out by drilling a pilot hole with a small drill (1/8" works well) followed by a 3/8" drill. Any type of cutting fluid or oil aids in the drilling. Coating the inside of the holes with touch up paint will help prevent rust.
- 9) Pivot the lower 511 guard into position aligning the drilled holes with the holes in the flange.
- 10) Install the button head screws from the top through the cross bar of the factory upper guard and flange on the lower 511 guard and use the flat washers followed by the lock nuts.
- 11) Place the upper 511 guard into the factory brush guard from the front while aligning the cutouts with the headlights. It is best to have the front of the guard flush with the face of the factory brush frame. Once the guard is positioned properly, hold in place with clamps.
- 12) Mark each side of the factory brush guard through the upper oval shaped holes on each flange of the 511 guard using a permanent marker. Don't mark the lower mounting locations at this time.
- 13) Remove the clamps and the 511 guard temporarily to allow for drilling the holes on each side. It may be helpful to pull the latching pin and rotate the upper portion of the factory guard forward while drilling and installing the 511 guard.
- 14) Using a center punch, punch each side of the factory guard in the center of the oval marked during step 2.
- 15) Start out by drilling a pilot hole with a small drill followed by a 3/8" drill.
- 16) Place the guard back into the factory brush guard and loosely install the two upper button head screws from the outside through the frame and flange, then a flat washer, followed by the lock nut.
- 17) Slightly snug the upper two screws. This will allow the guard to pivot for positioning of the lower mounting flanges.
- 18) Pivot the 511 guard to the desired depth and hold in place using clamps.
- 19) Mark each side of the factory brush guard through the oval shaped hole on each of the lower flanges using a permanent marker.
- 20) Remove the clamps and the 511 guard temporarily to allow for drilling the holes on each side. It is possible to drill the lower holes without removing the guard, but it is much easier to get it out of the way.
- 21) Using a center punch, punch each side of the factory guard in the center of the oval marked during step 9.
- 22) Start out by drilling a pilot hole with a small drill followed by a 3/8" drill.
- 23) If you are installing the optional side guards, they utilize the same mounting locations as the front guard. Use the longer 3/8" x 1-1/4" screws provided with the side guards to go through the side guards, factory brush guard and the flanges of the front guard. If desired, an additional screw can be used on the lower, rearward hole of the side guards.
- 24) Place the 511 guard back into the factory brush guard and install each of the 4 screws, washers and locknuts tighten them. Do not overtighten, as stainless steel hardware can be difficult to remove if stretched or a burr is developed within the thread.
- 25) Installation is now complete.



Completed Installation (guard appearance may vary depending on model)

