



Grill Guard Installation Guide

LA525 Loader - L2501, L3301, L3901

Thank you for your purchase! We want you to be completely satisfied with our products. If you have any questions or concerns, please reach out via the contact information above and we will do all that we can to assure your experience with us is a positive one.



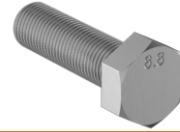
Qty: 6 - 3/8" x 1" SS
Button Head Screw



Qty: 6 - 3/8" SS
Nylon Lock Nut



Qty: 6 - 3/8" SS
Washer



Qty: 2 - M14 Hex
Head Bolt



Qty: 2 M14 Lock
Washers

Required / suggested tools:

Wrenches / sockets for lower pivot bolt hardware

Spring clamps

Permanent marker

Center punch

Hammer

1/8" drill

3/8" drill

Drill motor

9/16" wrench or 9/16" socket wrench

7/32" L key (allen wrench)

Below is the process for installing your grill guard on your tractor.

- 1) Assemble the bottom portion of the 511 guard to the middle portion of the 511 guard using two of the supplied screws, washers and nuts. The bottom portion goes on top of the middle guard. Do not tighten the screws at this time; leave the screws loose enough to allow movement.
- 2) Remove the two lower bolts and lock washers that attach the factory brush guard to the front of the tractor's frame.
- 3) Remove each of the nuts, the large inner washer and the two spring washers from the large pivot bolts at the bottom on each side of the factory brush guard, noting the order in which they are removed. Leave one of the large washers on each side.
- 4) Slide the pivot bolts outward until the end of the bolts are just inside the large washers that were left in place in step 2.
- 5) Place the bottom and middle guards assembled during step 1 into the factory brush guard from the front aligning the lower mounting flanges with the large pivot bolts.
- 6) Once the mounting flanges are aligned, push the large pivots bolts inward and install the washers and 1 of the nuts on each side in the opposite sequence in which they were removed during step 3. It is not necessary to tighten these nuts at this time.
- 7) Install the M14 bolts included in the kit in place of the bolts removed during step 2 and torque them to 100 ft/lbs.
- 8) Tighten the screws that hold the bottom and middle portion assembled during step 1.
- 9) Moving back to the pivot bolts, tighten the nuts on each side until the desired resistance is achieved while tilting the guard, then reinstall the remaining two nuts and tighten them to prevent the other two nuts from loosening.

- 10) Place the upper guard into the factory brush guard by tucking the upper flange under the top cross bar. Hold the guard in place by clamping the upper guard to the factory guard.
- 11) Position the bottom edge of the upper guard approximately 3/16" above the middle guard to assure clearance between the two guards when the factory guard is rotated forward. While the upper guard is clamped, hold it securely against the factory brush guard, pull the release pin and rotate the upper portion of the factory guard to assure that there is ample clearance between the upper and middle 511 guards.
- 12) Looking at the top of the upper guard in relation to the upper cross bar, adjust the upper guard so that it even on each side.
- 13) Mark the upper mounting locations on each side of the factory brush guard through the oval shaped hole on the upper 511 guard using a permanent marker.
- 14) Remove the upper guard and using a center punch, punch each side of the factory guard in the center of the oval marked during step 11.
- 15) Start out by drilling a pilot hole with a small drill (1/8" works well) followed by a 3/8" drill. Any type of cutting fluid or oil aids in the drilling. Coating the inside of the holes with touch up paint will help prevent rust.
- 16) Place the guard back into the factory brush guard and loosely install the two upper button head screws from the outside through the frame and flange, then a flat washer, followed by the lock nut.
- 17) Slightly snug the upper two screws. This will allow the guard to pivot for positioning of the lower mounting flanges.
- 18) Adjust the guard so that there is a slight gap between it and the lower cross bar of the factory guard.
- 19) Mark the lower mounting locations on each side of the factory brush guard through the oval shaped hole on the upper 511 guard using a permanent marker and then remove the guard.
- 20) Using a center punch, punch each side of the factory guard in the center of the oval marked during step 2.
- 21) Start out by drilling a pilot hole with a small drill followed by a 3/8" drill.
- 22) Place the 511 guard back into the factory brush guard and install each of the 4 screws, washers and locknuts and tighten them. Do not overtighten, as stainless steel hardware can be difficult to remove if stretched or a burr is developed within the thread.
- 23) Installation is now complete.



Completed Installation