



5Eleven DesignZ, LLC

Email: Superjet511@yahoo.com

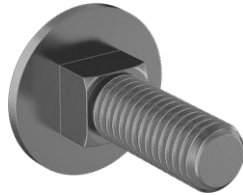
Phone: 734-719-0311

Grill Guard Installation Guide

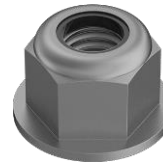
L2502, L3302, L3902 & L2501, L3301 & L3901 with the LA526 Loader

L4802 – with the LA766 Loader

Thank you for your purchase! We want you to be completely satisfied with our products. If you have any questions or concerns, please reach out via the contact information above and we will do all that we can to assure your experience with us is a positive one.



Qty: 6 – 8mm x
25mm Carriage Bolts



Qty: 6 – 8mm Nylon
Lock Nut

Required / suggested tools:

Wrenches / sockets for lower pivot bolt hardware

Below is the process for installing your grill guard on your tractor.

- 1) Remove each of the nuts and washers from the large pivot bolts at the bottom on each side of the factory brush guard, noting the order in which they are removed.
- 2) Slide the bolts outward until the end of the bolts are just inside the factory guard mounting brackets.
- 3) Place the 511 guard into the factory brush guard from the front side while aligning the lower mounting flanges with the large pivot bolts. It may be helpful to pull the latching pin and rotate the upper portion of the factory guard forward while installing the 511 guard.
- 4) Once the mounting flanges are aligned, push the large pivots bolts inward and install the existing washers and nuts in the opposite sequence in which they were removed. It is not necessary to tighten these nuts at this time.
- 5) Position the 511 guard into the frame of the factory guard and install each of the six carriage bolts through the factory guard and flanges of the 511 guard.
- 6) Install a flat washer on each carriage bolts on the inside followed by the lock nuts and tighten each of the bolts.
- 7) Moving back down to the large, lower bolts, tighten the nut adjacent to the washers until the desired amount of resistance is obtained when you rotate the factory guard.
- 8) Tighten the locking nut against the other nut to prevent them from loosening.
- 9) Installation is now complete.



Completed Installation